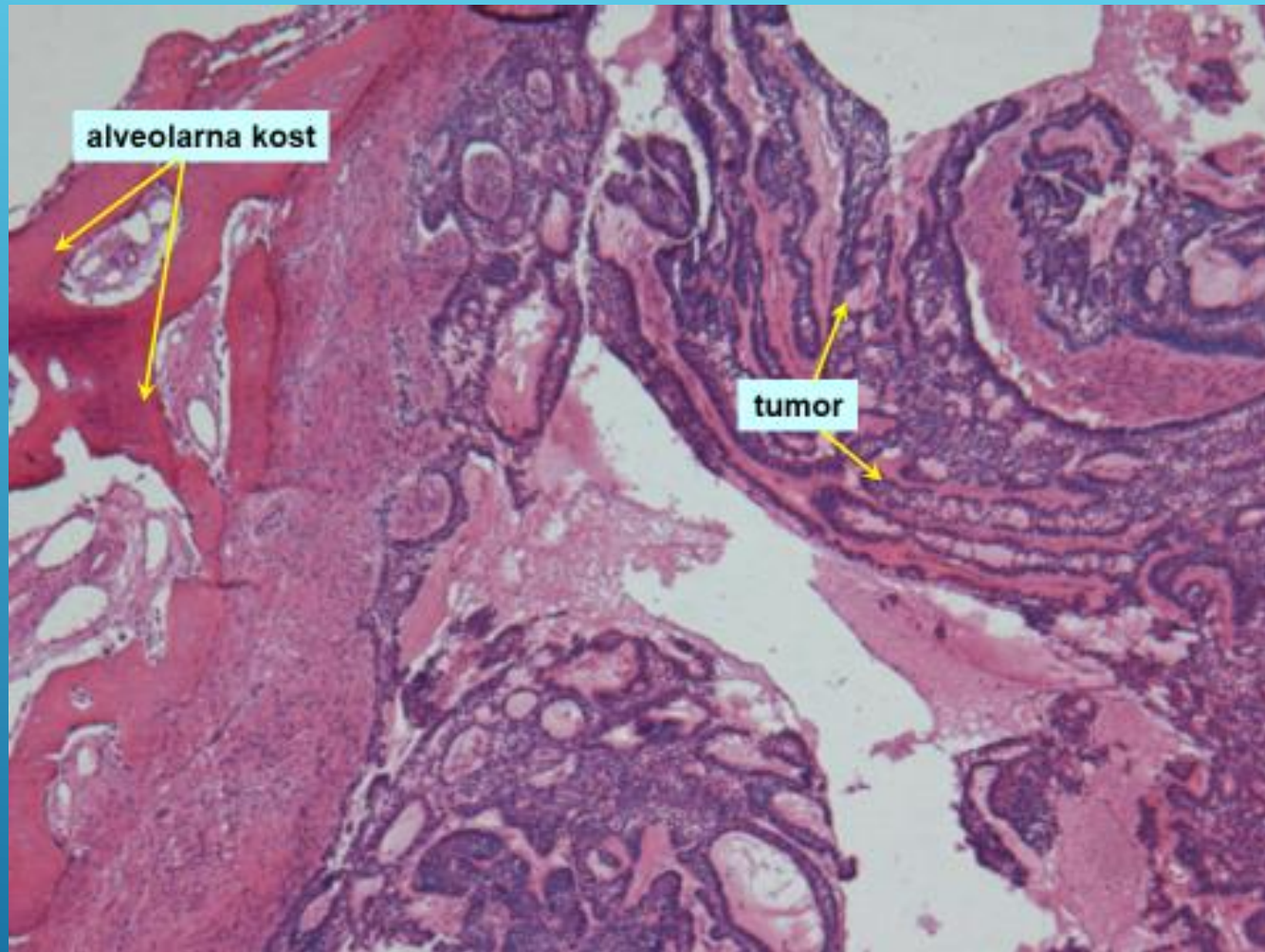


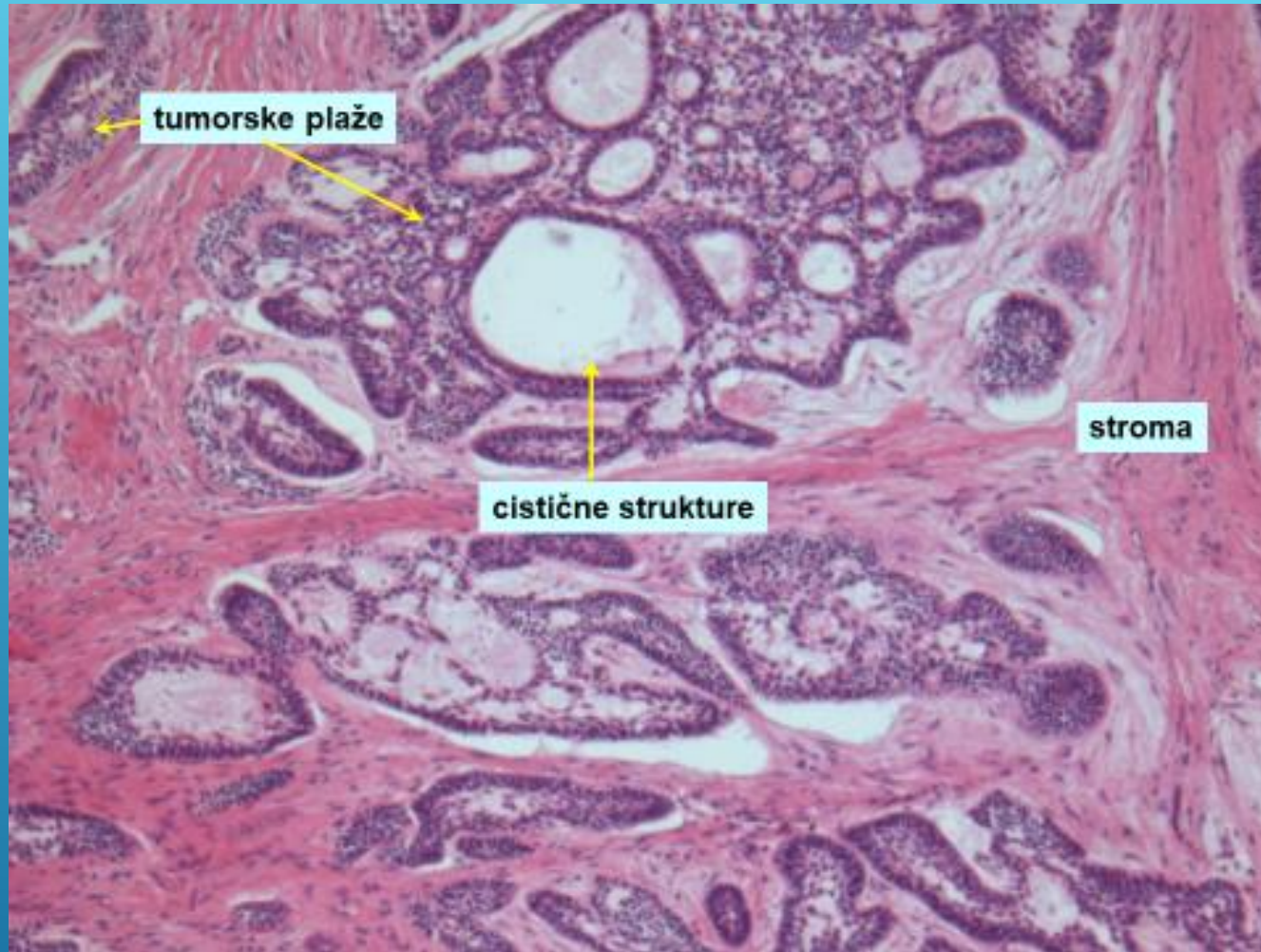
ODONTOGENI TUMORI

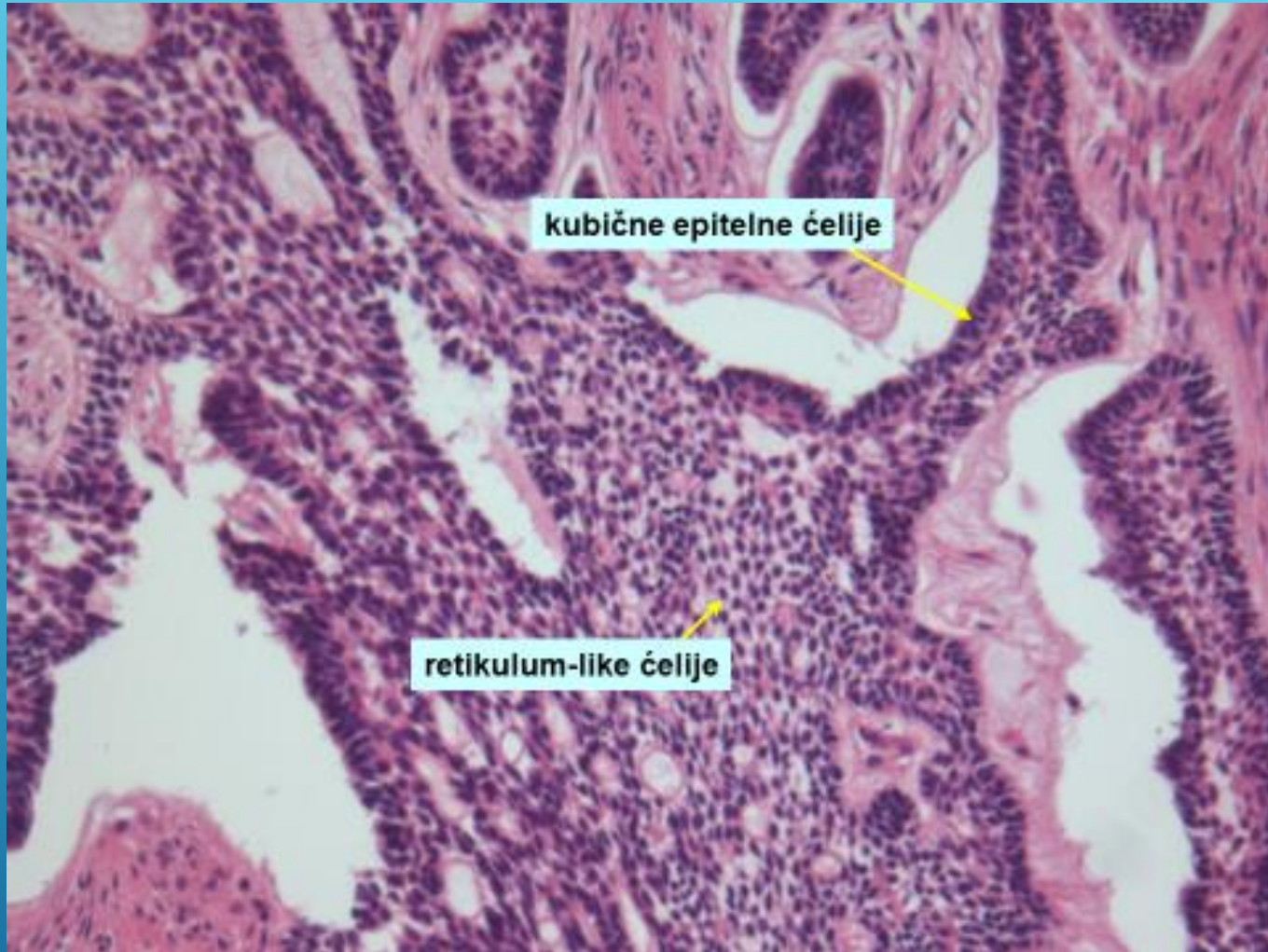
Dr sci. med. Mirjana Miladinović

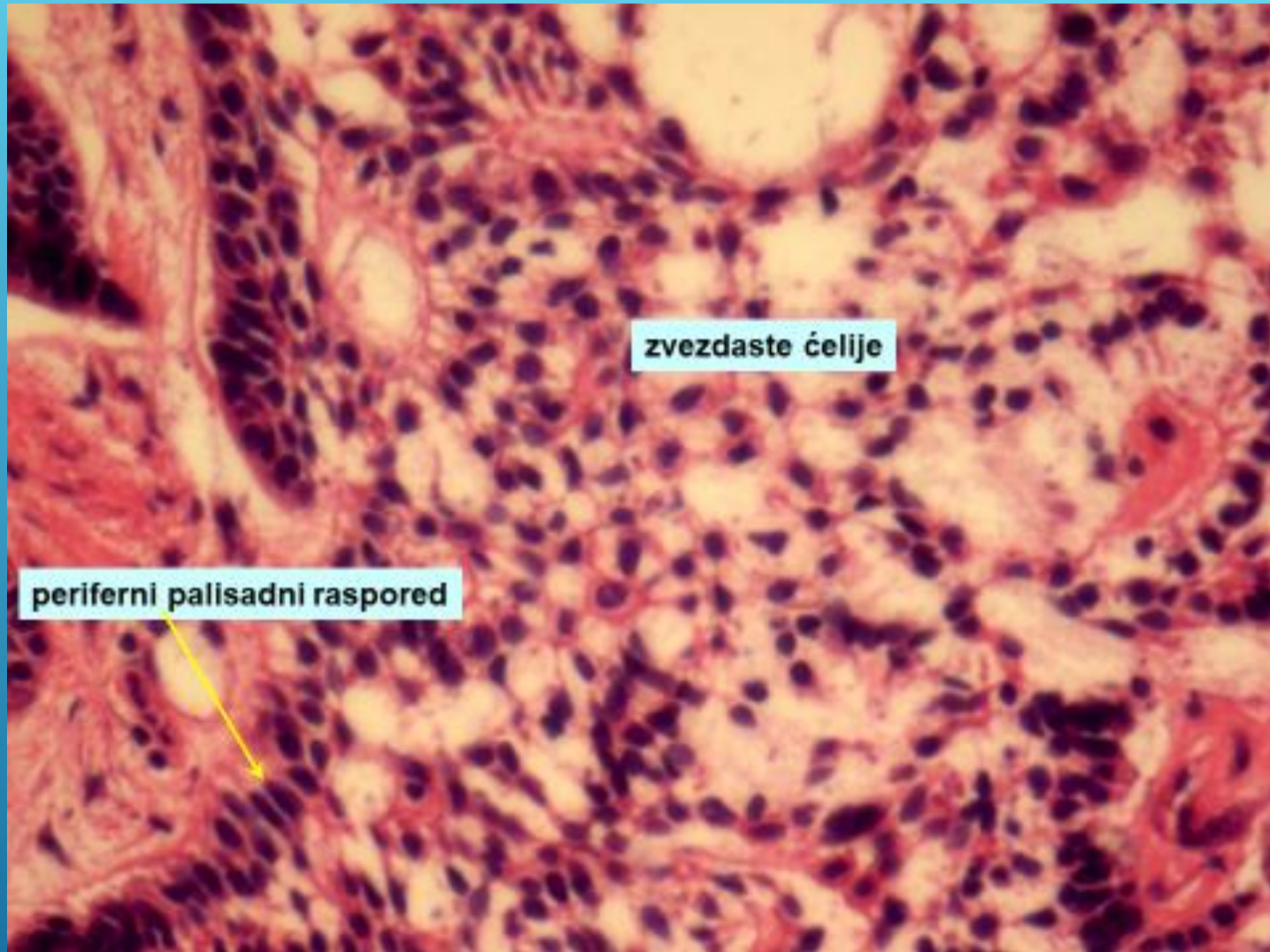
AMELOBLASTOMA







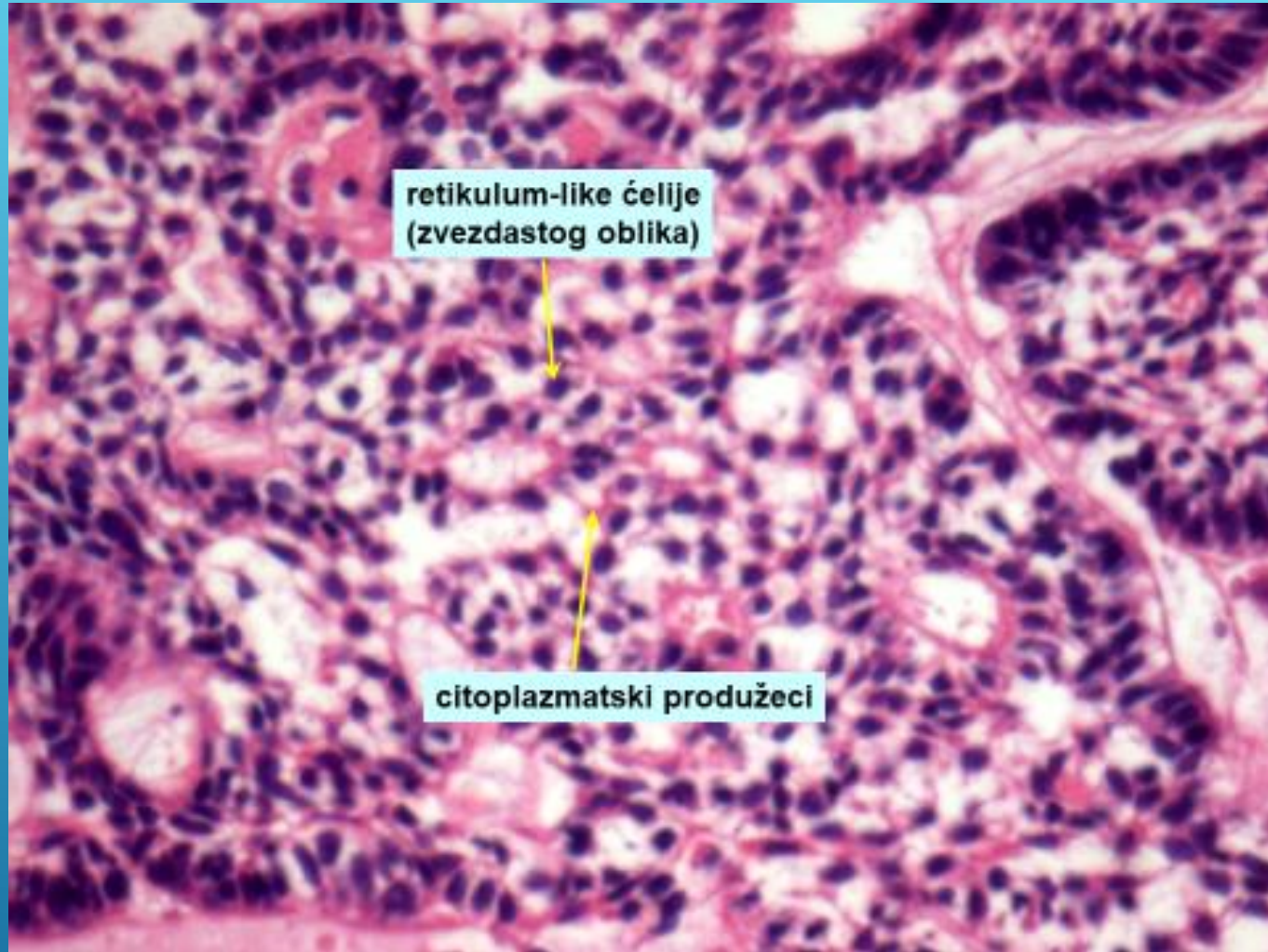




zvezdaste ćelije

periferni palisadni raspored





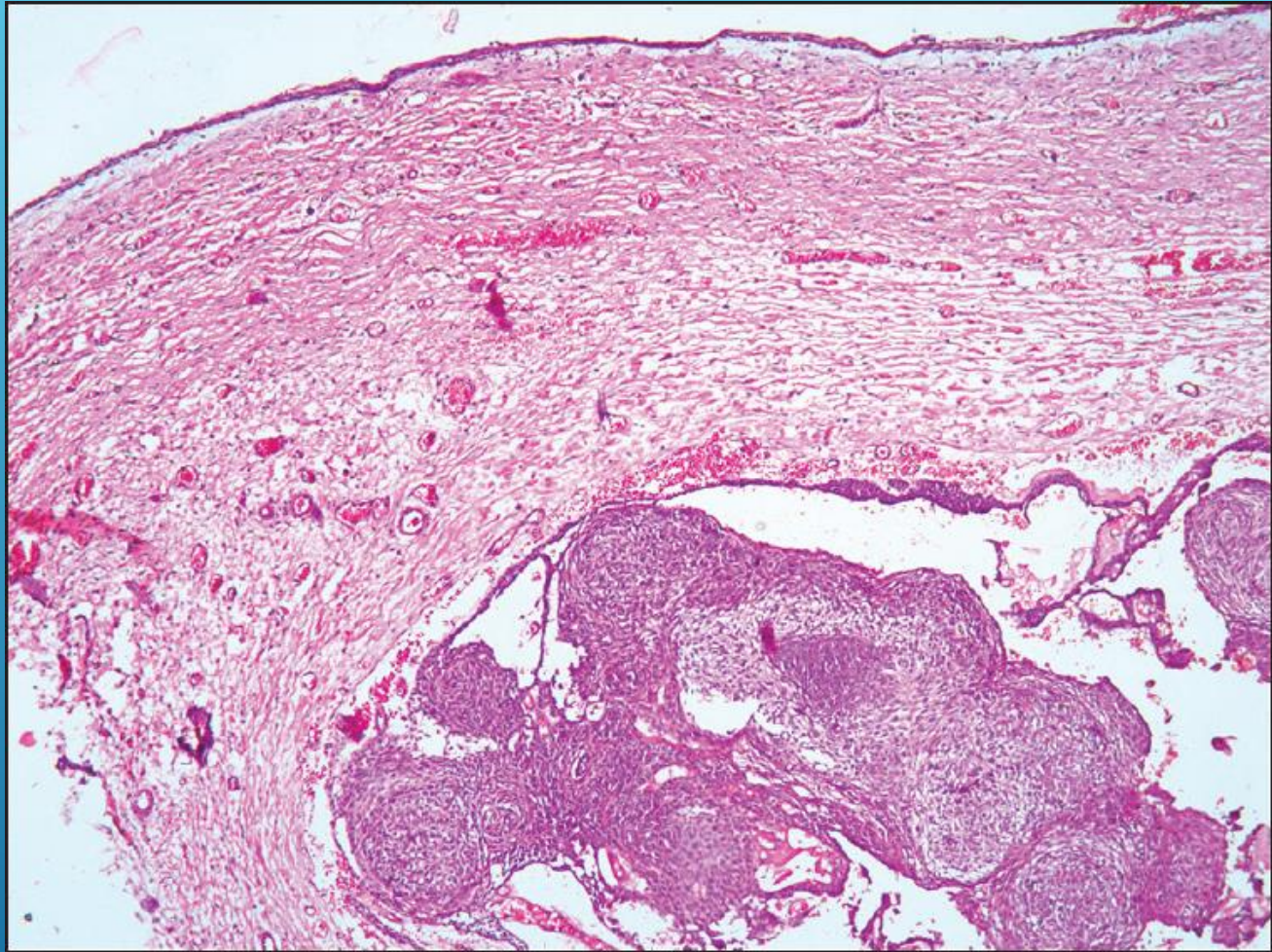
retikulum-like ćelije
(zvezdastog oblika)

citoplazmatski produžeci

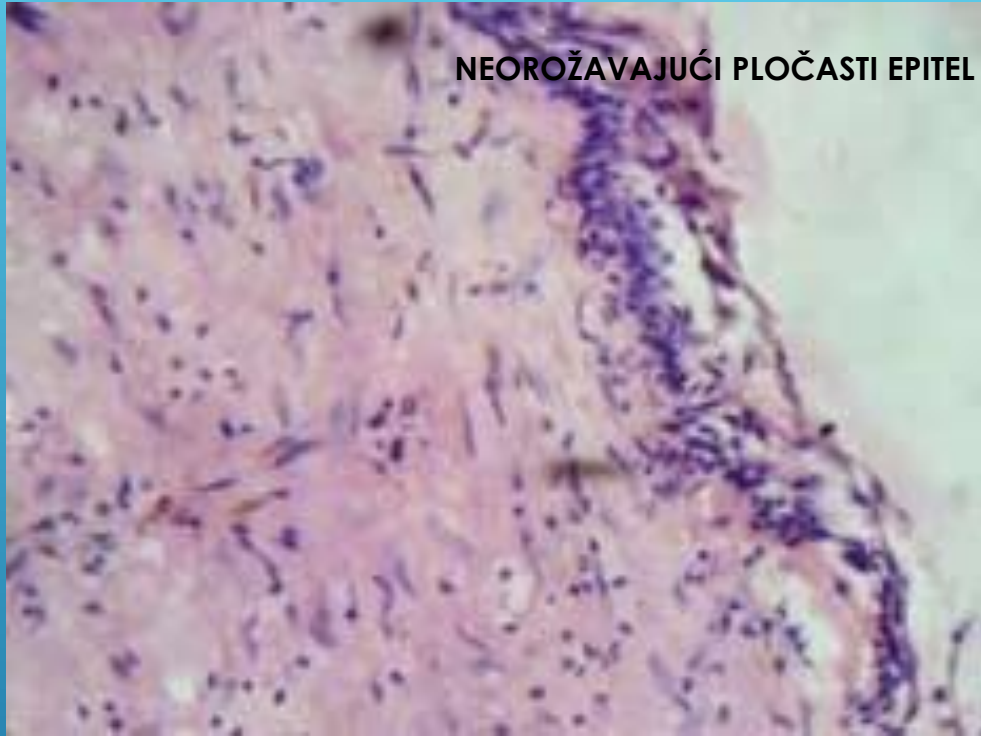


▶ Adenomatoidni odontogeni tumor



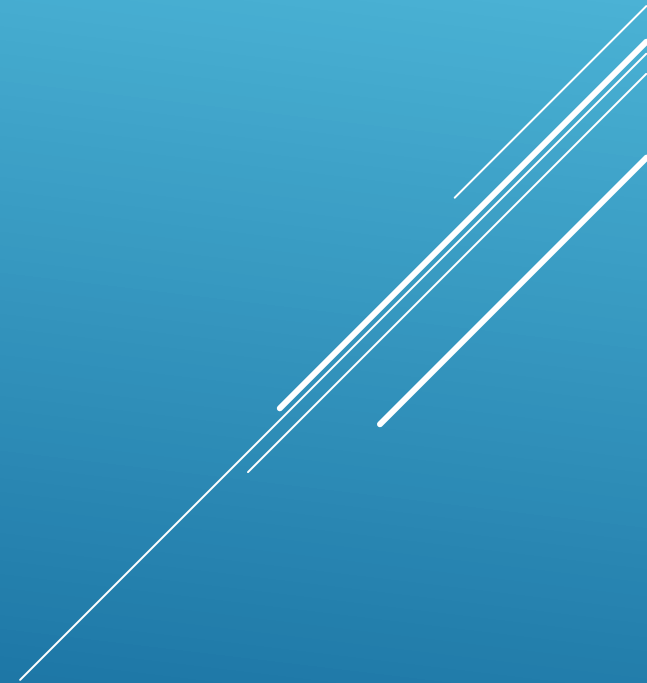


NEOROŽAVAJUĆI PLOČASTI EPITEL

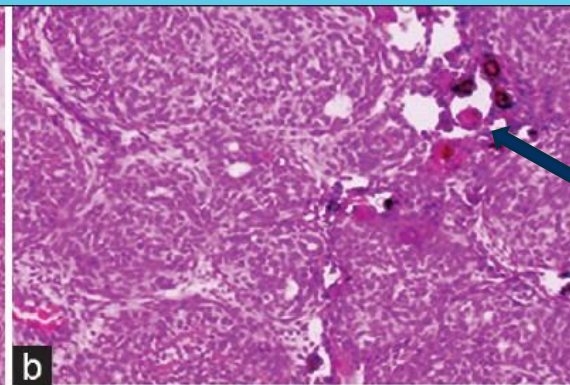
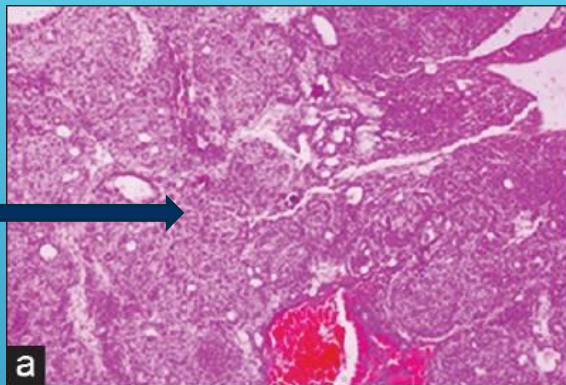




STRUKTURA NALIK NA ZUB KOJA OKRUŽUJE PRAZAN PROSTOR

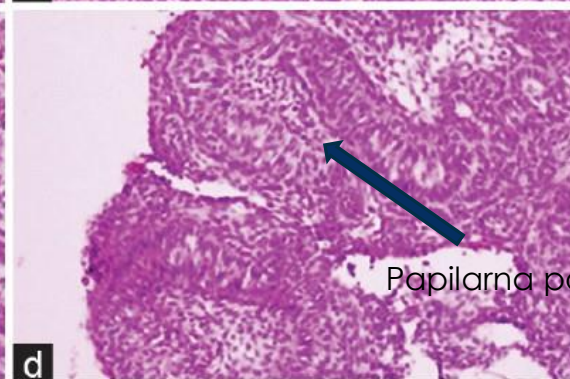
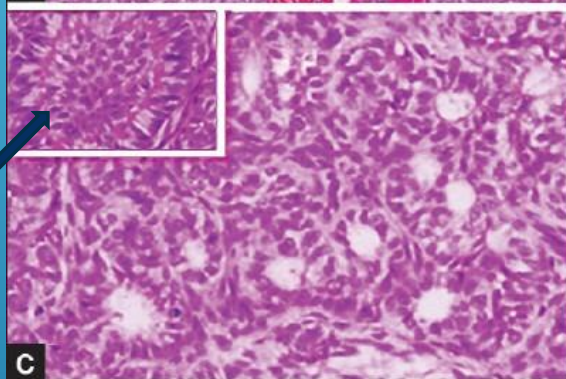


Celularna multinodularna proliferacija



Solidna gnezda sa kalcifikacijom

Duktusima slične strukture obložene kuboidalnim ćelijama

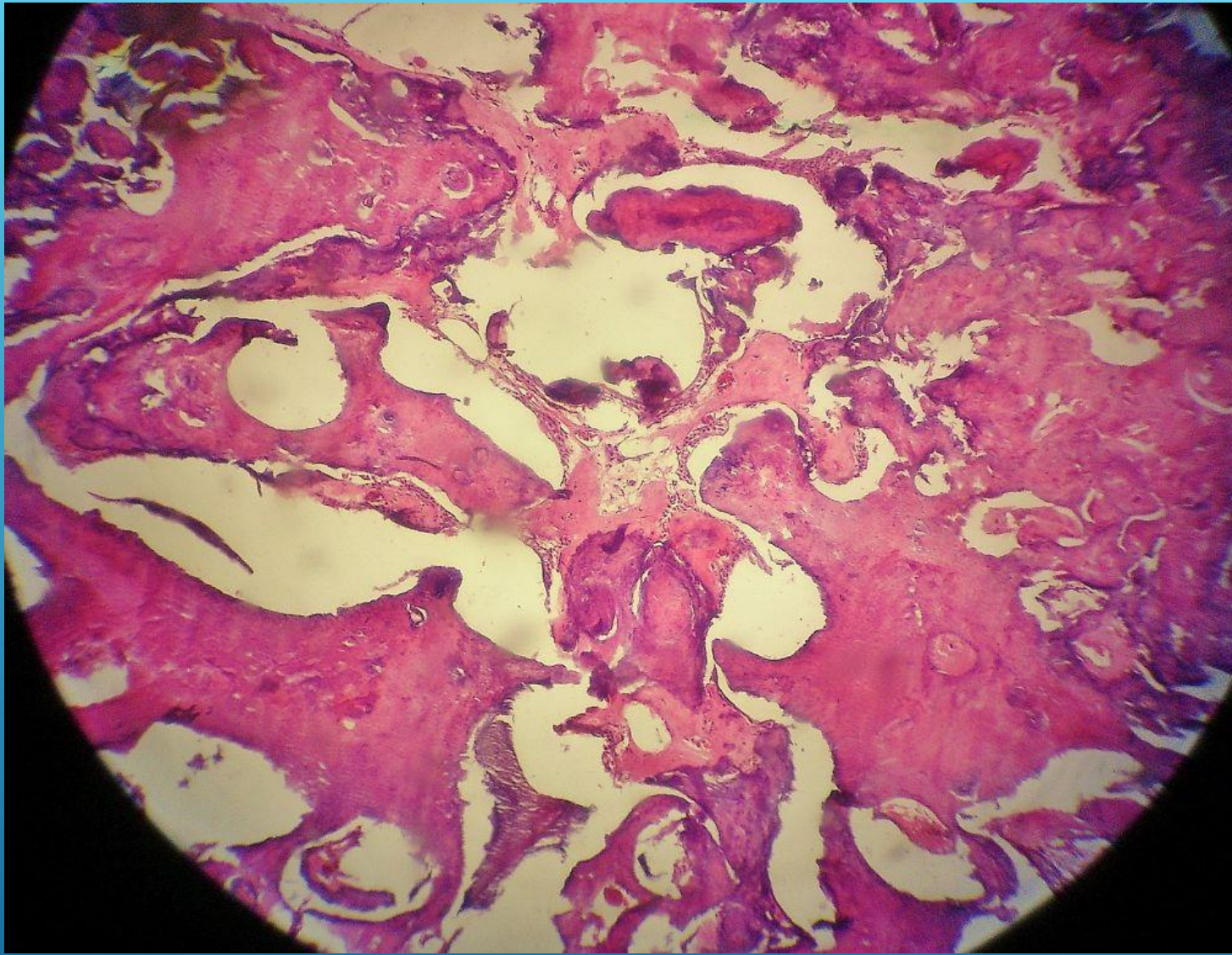


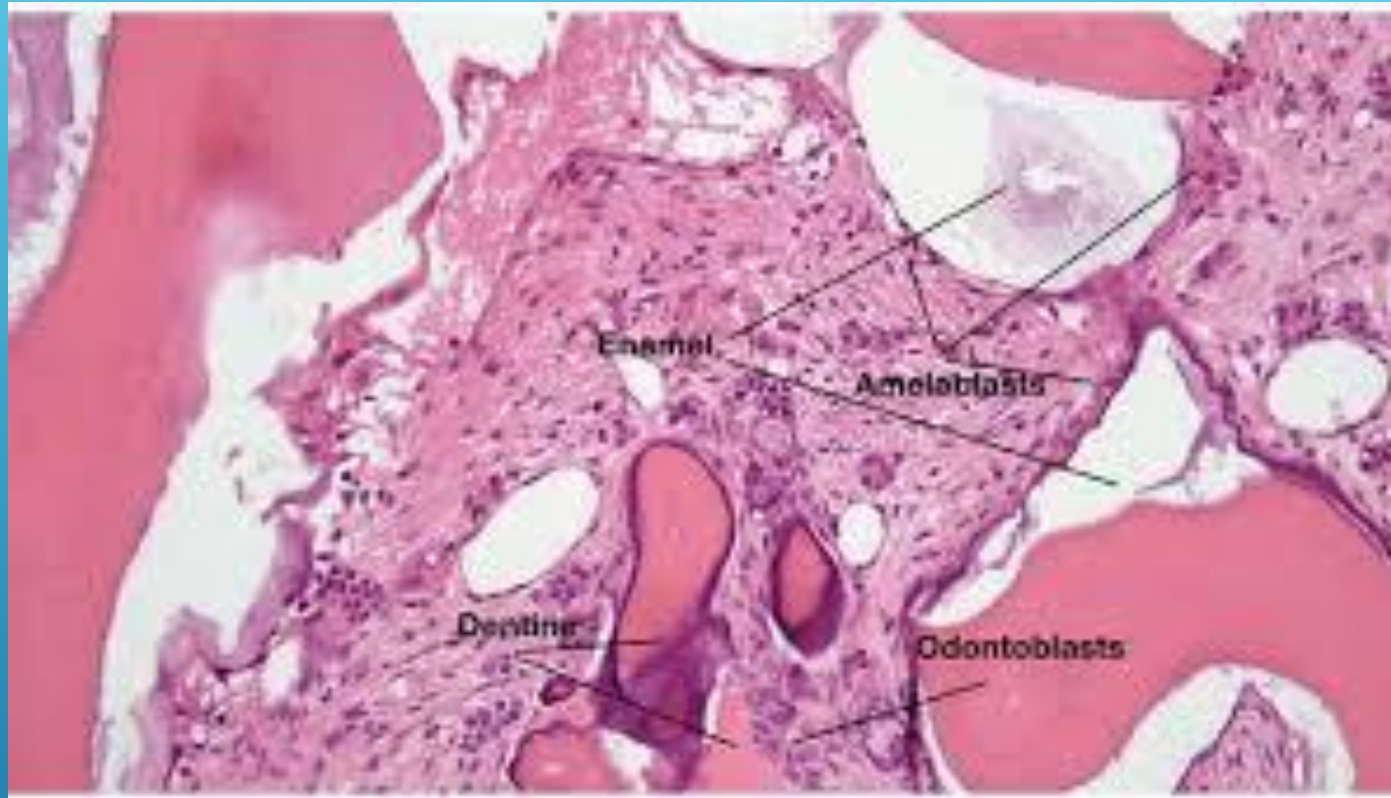
Papilarna površina

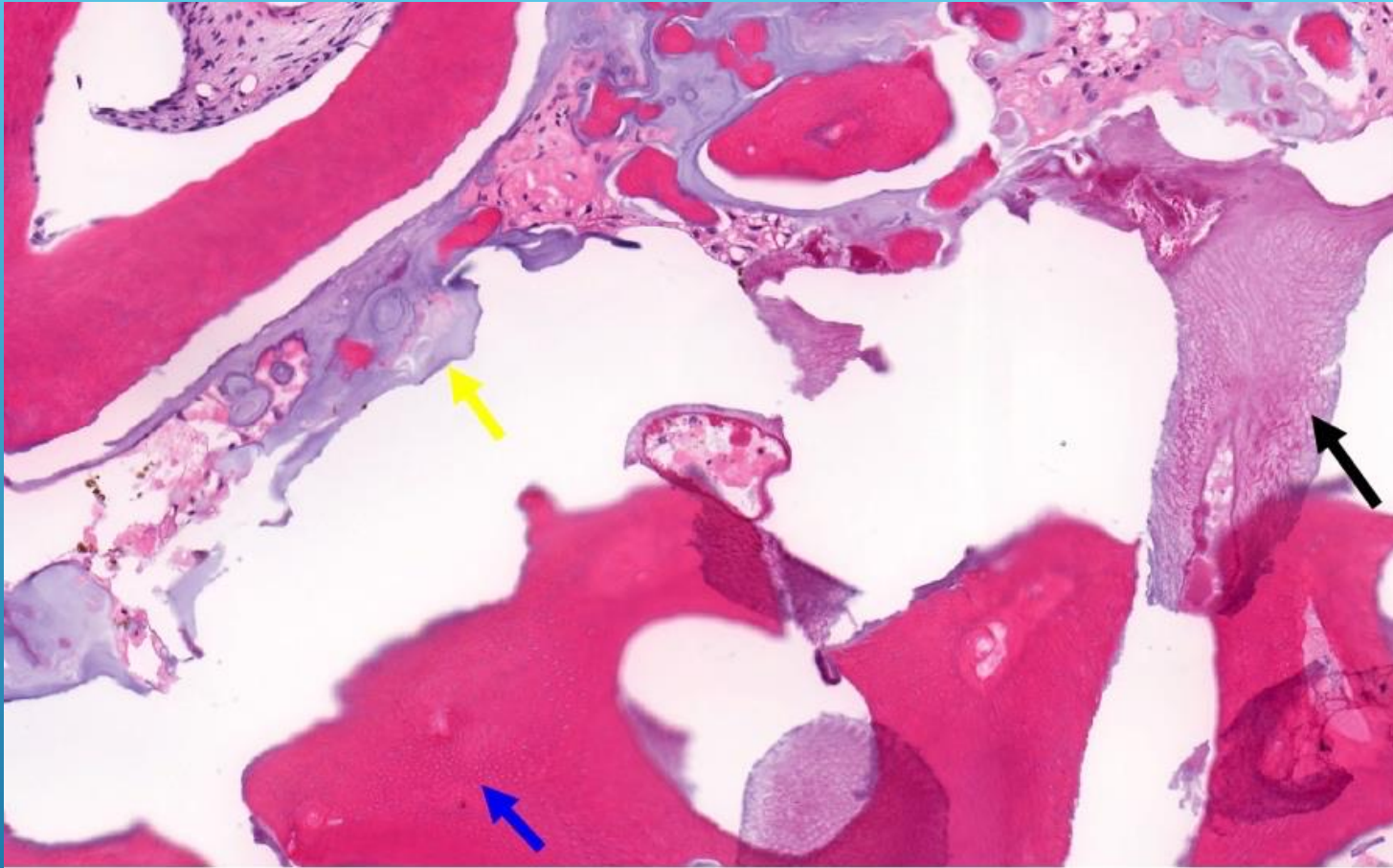


▶ Odontoma









Elements of complex odontoma: enameloid matix (yellow arrow), dentin (blue arrow) and enamel (black arrow), 110x